

ALYSEUM - Q-MIXI, Q-MIX & Q-MIXO - User's manual V2.0

1 Introduction



Once upon a time, needed a compact audio mixer for my personal Eurorack, including 4 inputs with LEVEL & PAN controls and an adjustable stereo audio level output, all in 6HP maximum!

The challenge of this new module was multiple:

- Strong focus on ergonomics in maximum 6HP.
- Pro audio components for excellent performance.
- LINE IN & OUT connectors on the rear panel, which allows to add future extension modules.
- Large MASTER stereo output potentiometer.
- Quality capacitors on the audio path.

I made it and, following the positive comments from my entourage, I said to myself "what about marketing it"?

I have since added a sub-mixer (Q-MIXI) and a balanced output module (Q-MIXO) with two independent headphone outputs.

Depending on your use and needs, Q-MIXI, Q-MIX and Q-MIXO modules can be used in several combinations:

- Individually
- In pairs (3 combinations)
- All three together

IMPORTANT

Q-MIX, Q-MIXI and Q-MIXO use quality capacitors in the audio signal path.

No DC signal can pass through the modules.

2 Hardware

2.1 Package Content

- Box contain 1 Q-MIX or 1 Q-MIXI or 1 Q-MIXO module.
- One plastic bag containing two M3 screws + two M3 nylon washers + one 10/16 pins power ribbon cable.
- Warranty & user manual access card.

2.2 Features & specifications

- High quality Audio OP-AMP type LME49720
- Power supply protected against reverse ribbon cable insertion.
- Power consumption (Full LED On):
 - Q-MIXI: +12V= 20mA / -12V= 20mA
 - Q-MIX: +12V= 27mA / -12V= 20mA
 - Q-MIXO: +12V= 120mA / -12V= 20mA
- Front panel width: 30 mm (6HP)
- Q-MIXI & Q-MIX maximum depth: 26 mm
- Q-MIXO maximum depth: 37mm

2.3 Installation

Carefully choose a stable location for your Eurorack, avoiding vibration, dust, heat sources, humidity or rain.

Q-MIX, Q-MIXI or Q-MIXO can only be used in a Eurorack synthesizer with an A-100 power supply.

During the entire installation procedure, always switch off your Eurorack.

Make sure that the red band on the flat power cable is correctly positioned at -12 Volts.

Important:

If you use only one of the modules, place it where you want according to your personal ergonomics.

If you use 2 or 3 of these modules, it is important to place jointly the Q-MIXI on the left, the Q-MIX in the middle and the Q-MIXO on the right, this is important regarding the rear wiring (see the chapter 2.5)

2.4 Back Audio Wiring

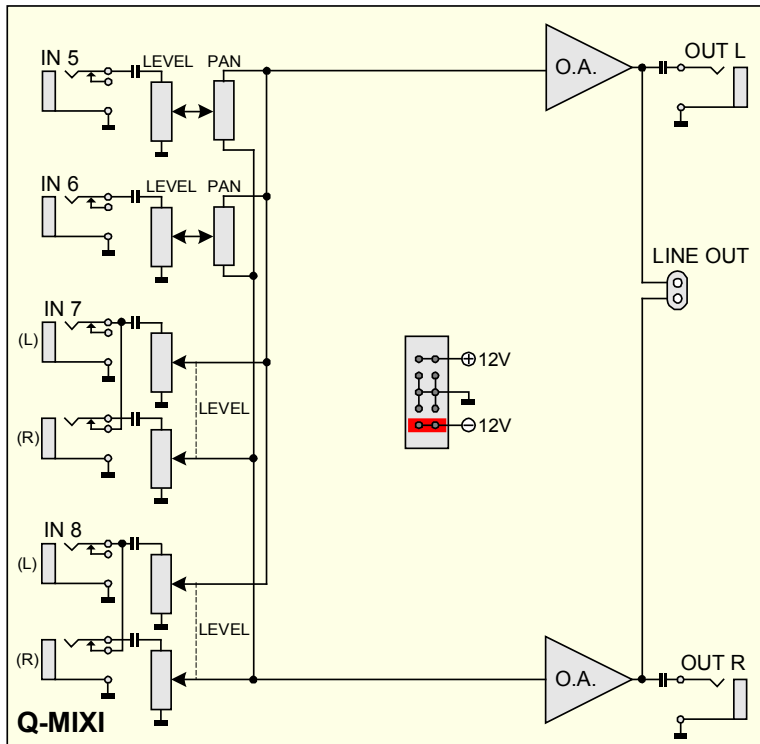
Q-MIXI is equipped on its back side with a cable in a white sheath. You can connect it directly to the LINE IN socket (bottom) of the Q-MIX.

Q-MIXO is equipped on its back side with a cable in a black sheath. You can connect it directly to the LINE OUT socket (top) of the Q-MIX.

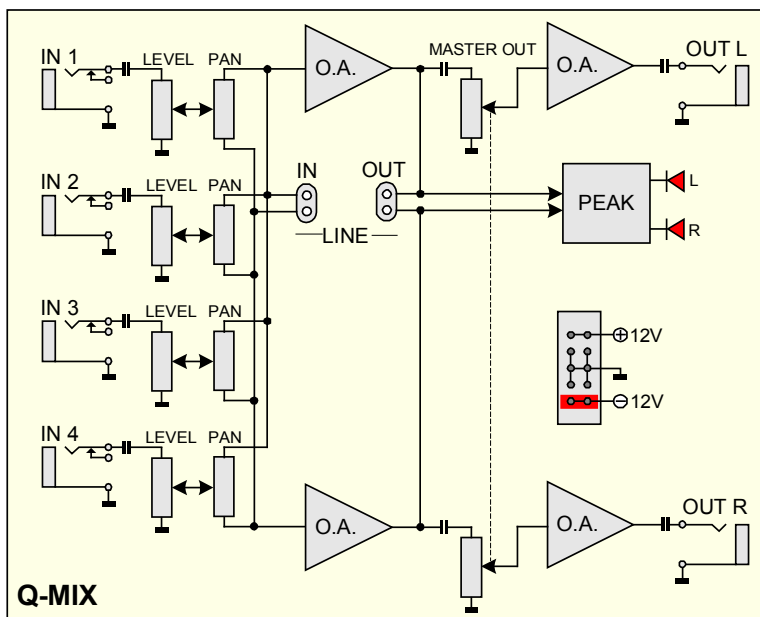
If you use Q-MIXI or Q-MIXO without the Q-MIX, please leave the cables unconnected.

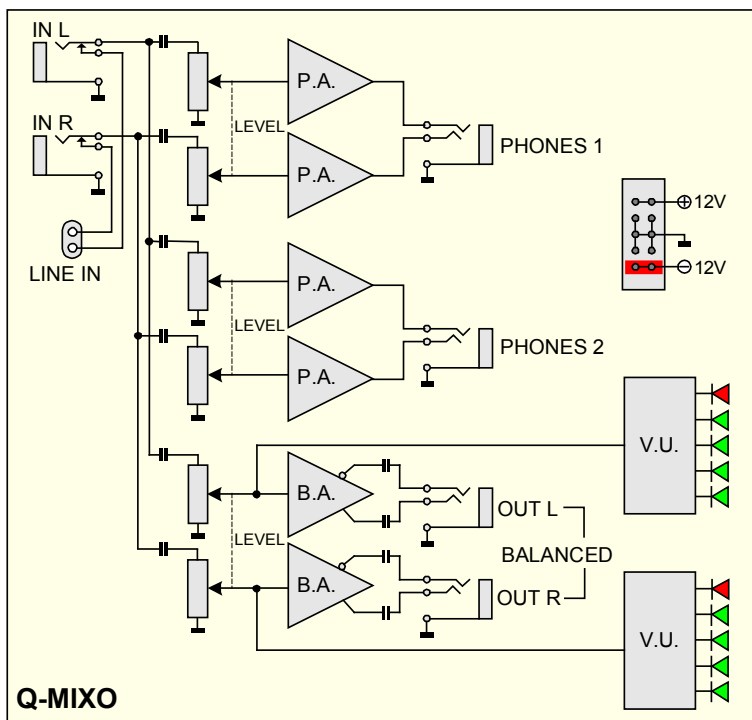
NB: It is not possible to realize a back audio wiring from the Q-MIXI to the Q-MIXO.

2.5 Bloc diagram



NB: if you only have a mono signal for stereo inputs 7 and 8, use the left input, it will automatically be connected to the right input.





NB: The rear wiring from the Q-MIX is automatically cut off if you insert a source into the input jacks.

3 How to use

Well, is it necessary to explain how to use the LEVEL, PAN and Master Out adjustments of these modules?

There is abundant literature on the subject, and if you really have a question, do not hesitate to contact me personally at willi@alyseum.com

I would be pleased to answer you because you made the effort to read this user manual up to here ☺

4 Miscellaneous

4.1 Disclaimer

No part of this document may be reproduced without the express permission of ALYSEUM.

All rights reserved, © 2011-2099 ALYSEUM.

The contents of this manual are subject to change without notice.

Brand names may be used and we hereby declare that we are using the name for the benefit of the brand owner, without any intention of infringement.

4.2 Warranty and repair

ALYSEUM warrants to the original purchaser that each of these products is free from defects in materials and workmanship for a period of two years from the date of purchase.

This warranty does not apply to products which have been repaired or modified by anyone other than **ALYSEUM**, or which have been subjected to electrostatic discharge, moisture, improper installation or use.

ALYSEUM assumes no responsibility for such occurrences under the terms of this warranty.

Before taking any action, please consult your dealer for further details or visit our support page at <http://www.alyseum.com/support> .